

PROFICY HISTORIAN DEVELOPMENT (HISTORIAN 142)

COURSE DESCRIPTION

The **Proficy Historian Development** course is designed to provide the student with a good working knowledge of Proficy Historian. It is intended for new users, however, the material in this course assumes prior knowledge of GE Fanuc Automation software. The course includes lab time for configuring and applying the Proficy Historian software to process applications.

WHO SHOULD ATTEND?

This course is designed for process, automation, or instrumentation engineers and system integrators who will be developing, configuring, and using applications on a Proficy Historian system.

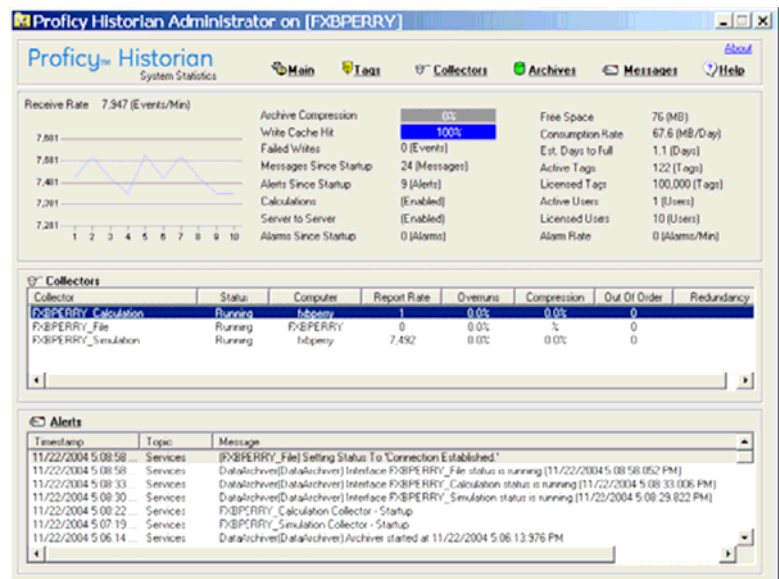
PREREQUISITES

Participants should have a working knowledge of Windows 2000, Windows NT 4.0, Windows XP and/or Windows 2003 Server operating systems.

WHAT TASKS WILL BE TAUGHT IN THIS CLASS?

Upon completion of this Course, the student will be able to:

- Understand architecture communication between Proficy Historian Servers and Proficy Historian Client nodes.
- Configure Proficy Historian nodes using the Proficy Historian Administrator.
- Configure Proficy Historian Data Collectors, including the iFIX Collector, OPC Collector, and File Collector.
- Manage and configure archives.
- View collected data using the Excel Add-In Client.
- Configure the Proficy Historian OLE DB Provider.
- Configure the Calculation Collector and the Server-to-Server Collector.
- Design and build a Proficy Historian security strategy.
- Use a variety of Proficy Historian Utilities and Operating System administrative options to troubleshoot.
- Use the Proficy Historian SDK to enhance a Proficy Historian application.
- Archive Alarms and Events using the Proficy Historian Alarm & Event Archiver.





COURSE FEE

The course fee is \$1295 USD. This includes two days of classroom training, use of CB Engineering's training computers, course manuals and lunch both days.

COURSE AGENDA

This is a two day course. Classes run from 8:30am until 4:30pm with a one-hour break for lunch.

Introduction to Proficy Historian

Study the basic features and architecture of Proficy Historian software.

Proficy Historian Administrator

Configure Proficy Historian, including collectors and archives.

Collector Overview

Understand the available collectors and install collectors using the Administrator.
Configure Collector Redundancy

Proficy Historian Collectors

Install and configure iFIX, OPC, and File Collectors.

Proficy Historian Server

Manage and configure data archives.

Proficy Historian Clients

Understand the available clients, including iFIX and the Excel Add-In.

Excel Add-In

Build reports to display Proficy Historian data using the Excel Add-In.

OLE DB

Access Proficy Historian data using standard OLE DB applications, including the Proficy Historian Interactive SQL Client.

Proficy Historian Collectors

Install and configure Calculation and Server-to-Server Collectors.

Proficy Historian Security

Design and build an Proficy Historian security strategy.

Proficy Historian SDK

Use the Proficy Historian SDK to enhance a Proficy Historian application.

Proficy Historian Alarm And Event Archiving

Use the Alarm and Event collector to collect and then Archive Alarms and Events to the Proficy Historian Server. Retrieve Alarm and Event data with client applications.

COURSE DATES

Please visit our website at www.cb-pacific.com for upcoming dates of all courses, and to register on-line. Alternatively, you can contact us at info@cbeng.com or by phone toll-free at 1 (800) 992-2364.